

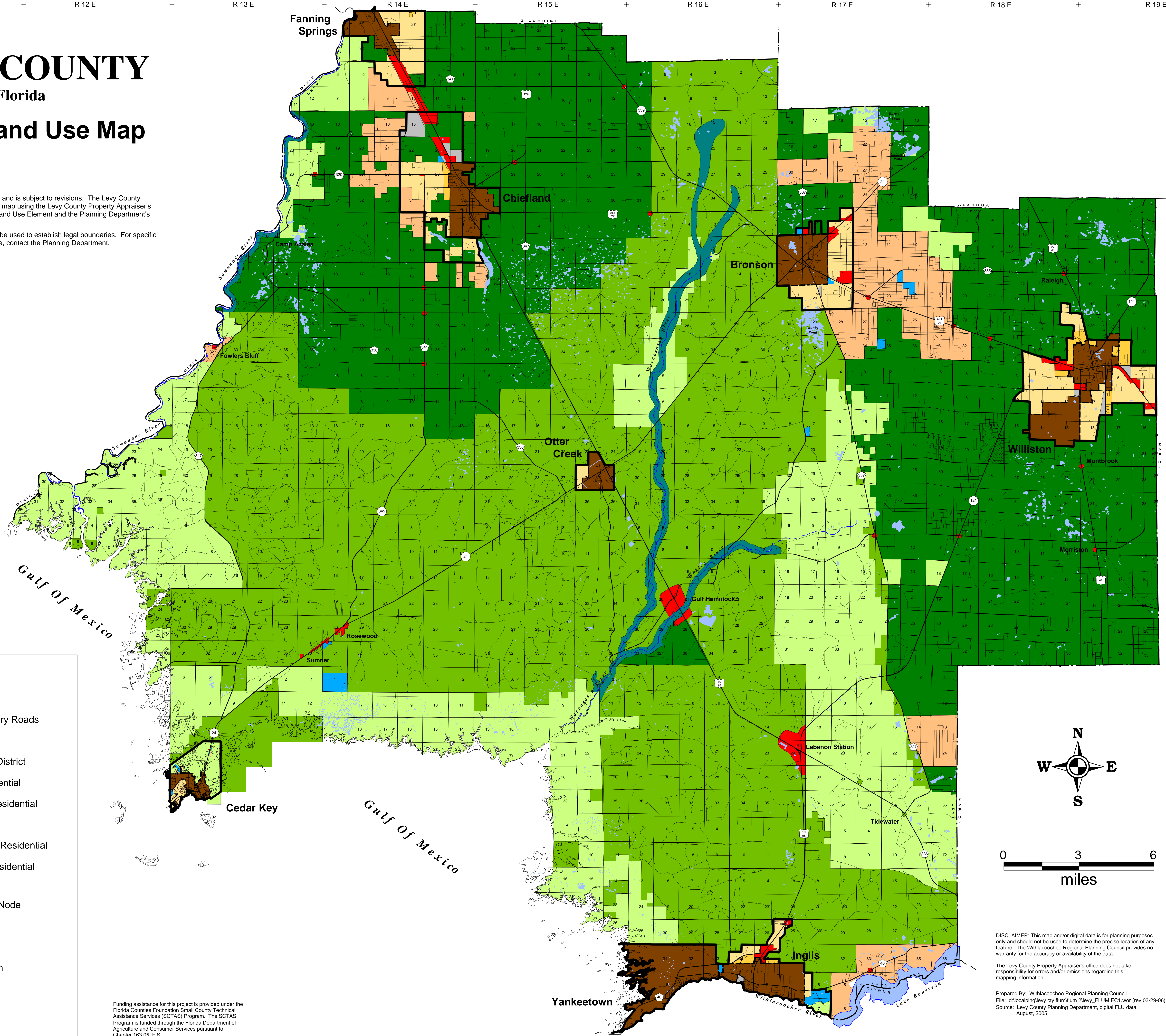
# LEVY COUNTY

## Florida

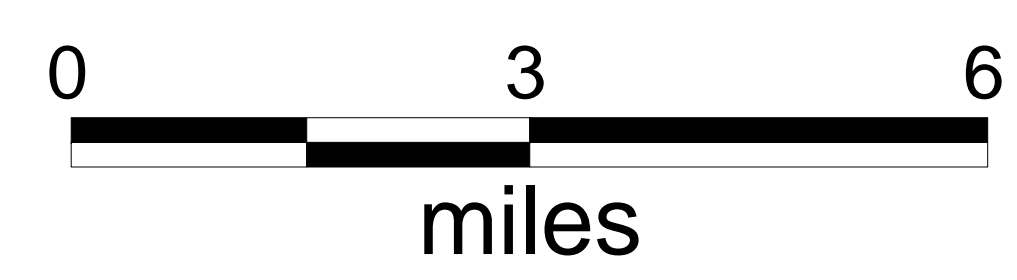
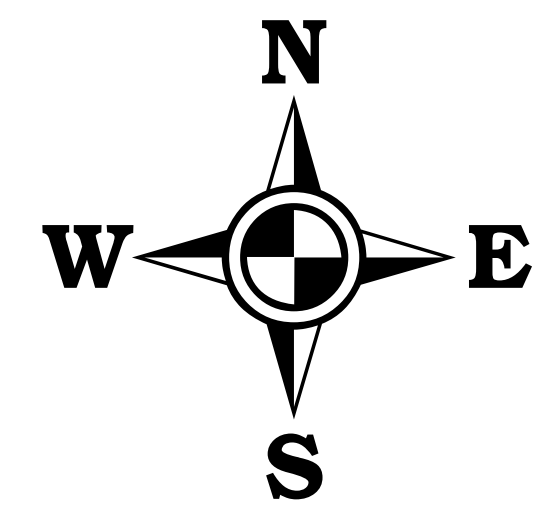
### Future Land Use Map

This map is a generalized document and is subject to revisions. The Levy County Planning Department generated this map using the Levy County Property Appraiser's database, the Levy County Future Land Use Element and the Planning Department's maps.

The indicated boundaries are not to be used to establish legal boundaries. For specific information concerning your land use, contact the Planning Department.



- LEGEND:**
- Major Roads
  - Local and Secondary Roads
  - City or Town
  - Municipal Service District
  - Low Density Residential
  - Medium Density Residential
  - Rural Residential
  - Agricultural / Rural Residential
  - Forestry / Rural Residential
  - Commercial
  - Rural Commercial Node
  - Industrial
  - Public
  - Natural Reservation
  - Conservation



DISCLAIMER: This map and/or digital data is for planning purposes only and should not be used to determine the precise location of any feature. The Withlacoochee Regional Planning Council provides no warranty for the accuracy or availability of the data.

The Levy County Property Appraiser's office does not take responsibility for errors and/or omissions regarding this mapping information.

Prepared By: Withlacoochee Regional Planning Council  
 File: d:\local\levy\levy city\flum\levy\_FLUM\_EC1.wor (rev 03-29-06)  
 Source: Levy County Planning Department, digital FLU data, August, 2005

Funding assistance for this project is provided under the Florida Counties Foundation Small County Technical Assistance Services (SCTAS) Program. The SCTAS Program is funded through the Florida Department of Agriculture and Consumer Services pursuant to Chapter 163.05, F.S.